



AIR HOSE COUPLINGS



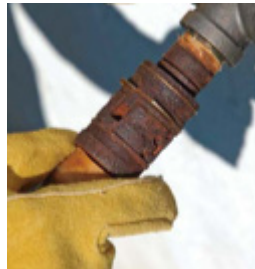
Nitrogen Kills!
Specify the patented yellow ring!
Simply the best and safest way to avoid
deadly nitrogen accidents in plants.



Patented Nitrogen Ring

Single-Lock and Double-Lock Couplings (Bowes and Thor-style Interchange)

- Campbell locking sleeves are manufactured from a high-strength zinc/aluminum alloy to solve seizing and galling problems caused by rusty steel sleeves (comparison at below).
- Crimpnology™ hose ends for the ultimate in safe hose retention (See pressure ratings below).
- Available with first-ever “Nitrogen Only” Warning Rings for safe hose differentiation. Nitrogen kills! Always specify the yellow warning ring for Nitrogen ... on both the hose coupling and manifold coupling (below.)
- Couplings are available with male npt, female npt, and hose end.
- Single-Lock couplings available with plated steel or brass bodies.
- Double-Lock couplings available with plated steel or stainless steel bodies.



Universal Couplings & UniversaLock™ Couplings

- Crimpnology hose ends for the ultimate in safe hose retention. (See pressure ratings below.)
- UniversaLock couplings automatically lock onto any universal-style coupling (right).
- Manufactured from ASTM A536 ductile iron for strength and durability.



* See footnotes 1, 2 and 6 on Page 1 of the Campbell Fittings Catalog.

** Only when connected to another UniversaLock coupling.

MAX. SYSTEM WORKING PRESSURE (PSI @ 70°F) *					
Hose System Components			Hose Size		
Fitting/Coupling	Attachment	Hose Type	1/2	3/4	1
UniversaLock™	Ferrule	Air	300**	300**	300**
Universal	Ferrule	Air	150	150	150
Single-Lock Cplg	Ferrule	Air	300	300	300
Double-Lock Cplg	Ferrule	Air	300	300	300

