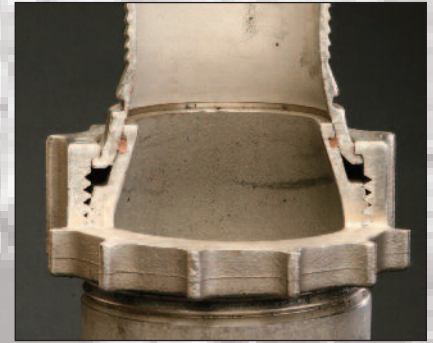


# SPECIALTY CHEMICAL HOSE COUPLINGS

## ChemJoint® Couplings

### Unique safety features:

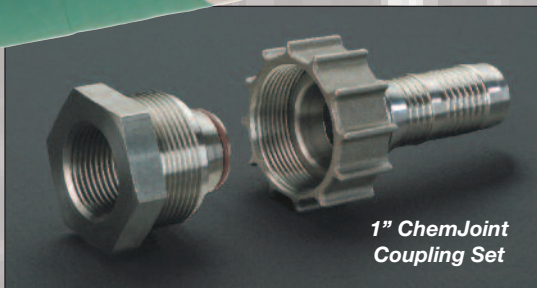
- Hand-tight, leak free coupling with zero evaporatives. (right)
- Crimpnology hose ends
- Excellent for heavy viscous media. (See photo below)
- Excellent for line dedication.
- Replaces cam and groove couplings in high vibration areas.
- Replaces cam and groove couplings in tight spaces where a hand-tight coupling is preferable to closing two cam handles.
- Replaces flanges, reducing cost and cutting maintenance time.
- Available with weld-on hose ends for metal hose applications (left).



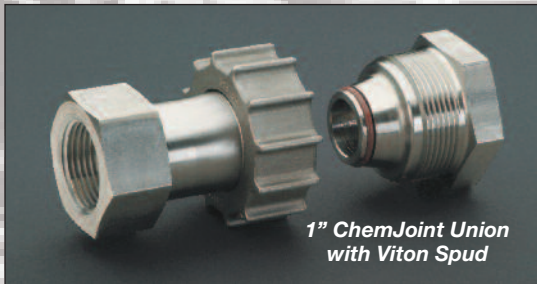
**Cutaway of coupling mating area: Mating surfaces are tapered and provide a metal-to-metal interface with a Viton o-ring secondary seal. Hand-tight, leak-free!**

## ChemJoint® Union

- Offers flexibility when plumbing hoses in plant.
- Threads onto ChemJoint male stems for hose-to-hose connections.



**1" ChemJoint Coupling Set**



**1" ChemJoint Union with Viton Spud**



**This plant replaced all the cam and groove outlets with Chemjoint outlets due to constant leaks caused by viscous material.**

MAX. SYSTEM WORKING PRESSURE (PSI @ 70°F) SEE NOTE 1

Hose System Components			Hose Size										
Fitting/Coupling	Attachment	Hose Type <sup>2</sup>	1/2	3/4	1	1-1/4	1-1/2	2	2-1/2	3	4	6	8
ChemJoint/Male Stem	Ferrule	Chemical	350	400	450	325	250	250	225	225	200	-	-
ChemJoint/Male Stem	Ferrule	Rubber	350	400	450	425	400	350	325	300	250	-	-
ChemJoint Weld-On and Union	None	None	-	800	800	-	650	600	-	600	-	-	-

See footnotes 1 and 2 in the Pressure Rating Chart in the Campbell Web Site Tech Center

# Campbell Fittings

**THE LEADER IN HOSE SYSTEMS TECHNOLOGY**

Front & Washington Streets, Boyertown, PA 19512, USA  
800-367-3678, [www.CampbellFittings.com](http://www.CampbellFittings.com)